

MODEL:- TS 2000 V
TYPE :- Rack and Pinion

- **Max Leaf Width**
Up to 1250mm
- **EN1154 Power rating**
Power 2 / 4 / 5 (13nm/ 26nm/ 37nm)
- **Fitting Configurations**
Fig 1, fig 61 , fig 66
- **Door Action** **Handed?**
Single action No
- **Power adjustment**
Position of body on door
- **Back check**
N/A
- **Latch Action**
Pre-load arm to 80°
- **Delayed Closing**
N/A
- **Closing Speed**
Valve adjustment
- **Hold Open Facility**
Hold-open arm available
70 °- 150 °

The following information is only a guide.

- **Opening Angle** fig 1 180° *

- **Fire Certification** CF 252

ELECTRICAL DATA:

- **Operating Voltage** N/A
- **Power** N/A
- **Current** N/A

- **Accessories & Finishes**
Refer to Product Guide & price list page 1.32

- **Supplied as Standard Package**
GEZE TS2000V c/w link arm,screw
accessories & installation template .

Accessories

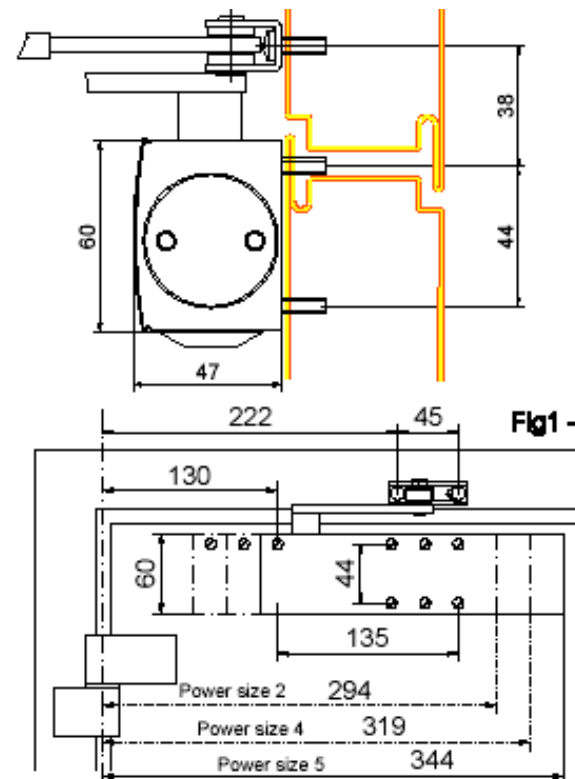
A Mounting plate is available for doors where direct installation is not possible

Interlocked spindled extension 10 mm - 20 mm

Drilling template available

Notes

- * 180° hold open only with offset hinges (Recommend 36mm offset)



- **Closer size** (H x L x D)
60mm x 226mm x 47mm

NOTE: MECHANICAL HOLD OPEN FACILITIES ARE NOT SUITABLE FOR FIRE DOORS